

Import Guide for Iris Syscal ERT/IP data

This import guide will go through the steps for importing ERT and IP data created with the Iris Syscal instrument.

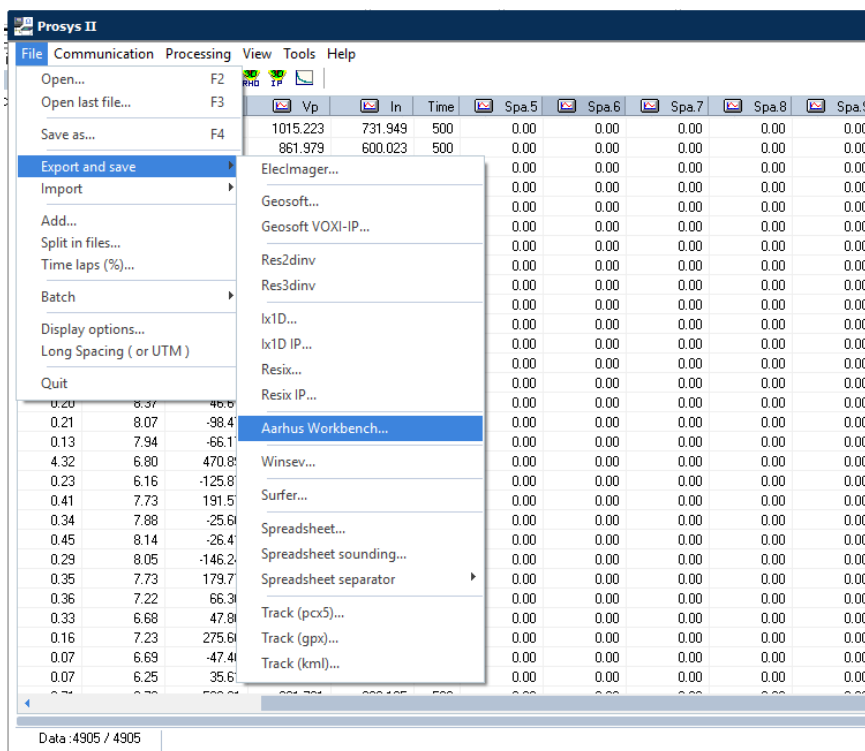
Import files

Three files can be imported for each profile:

- .txt spreadsheet data exported from Iris Prosys program.
- .ewp file which contains the coordinates for the ERT profile (not needed)
- Surfer grid file or .eZ file for topography (not needed)

.txt spreadsheet file

In the Prosys II program from Iris you can export the data into Aarhus Workbench format. Just go to File-> export and save→ Aarhus workbench.



The output as a column based text file which included all data and waveform information needed for import into Aarhus Workbench.

The .ewp and topography file are not needed for import.

.ewp file

The .ewp file contains coordinates for the ERT profile made and has to be made manually. The file needs to contain at least two coordinates. It does not have to be coordinates for the first and last electrode in the profile, it can be for any two electrodes. The importer in Aarhus Workbench will automatically make a linear interpolation for the remaining electrodes in the profile. The more coordinates that are described in the .ewp file the more precise the interpolation will be.

If the profile is not a straight line, but makes a turn this can be accounted for by setting Angcon to 1 at the electrode where the turn starts. An example of a .ewp file is listed below including comments for each line.

Line no.	Electrode no.	utm x coordinate	utm y coordinate	Standard deviation (m) for x coordinate (GPS precision)	Standard deviation (m) for y coordinate (GPS precision)	Electrode distance (m)	Standard deviation (m) for electrode distance	Flag if profile makes turns	Elevation. Interpolates between z coordinates for remaining electrodes.
1	No	utm x	utm y	stdx	stdy	edist	stde	Angcon	utmz
2	1	494940.17	6177505.91	3	3	5	0.1	0	3
3	83	494775.71	6177129.36	3	3	5	0.1	0	30

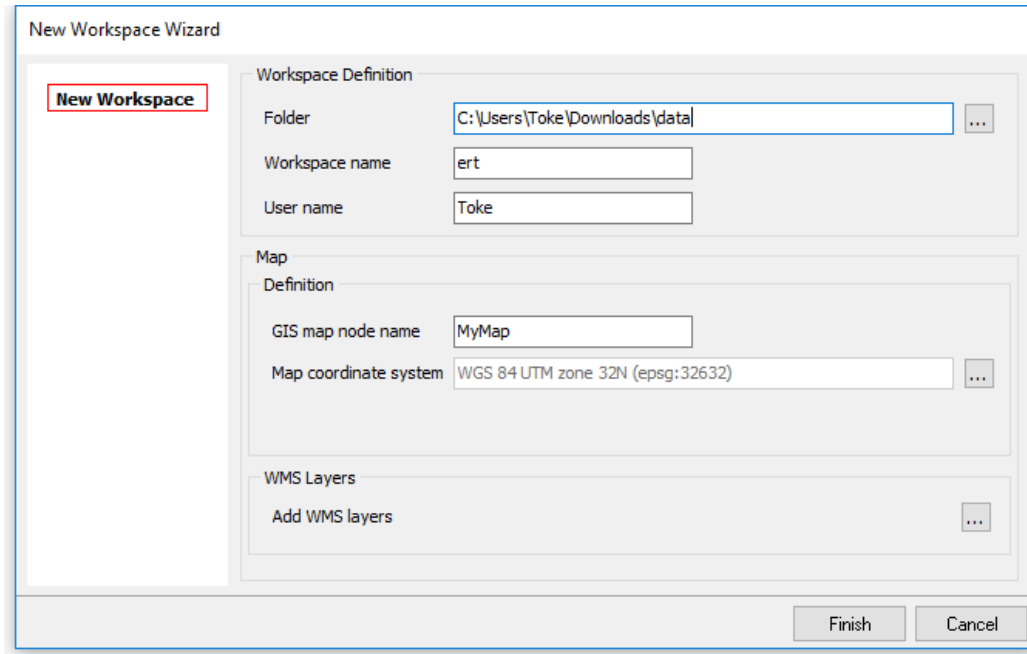
Table 2. Example of .ewp file.

.eZ topography file

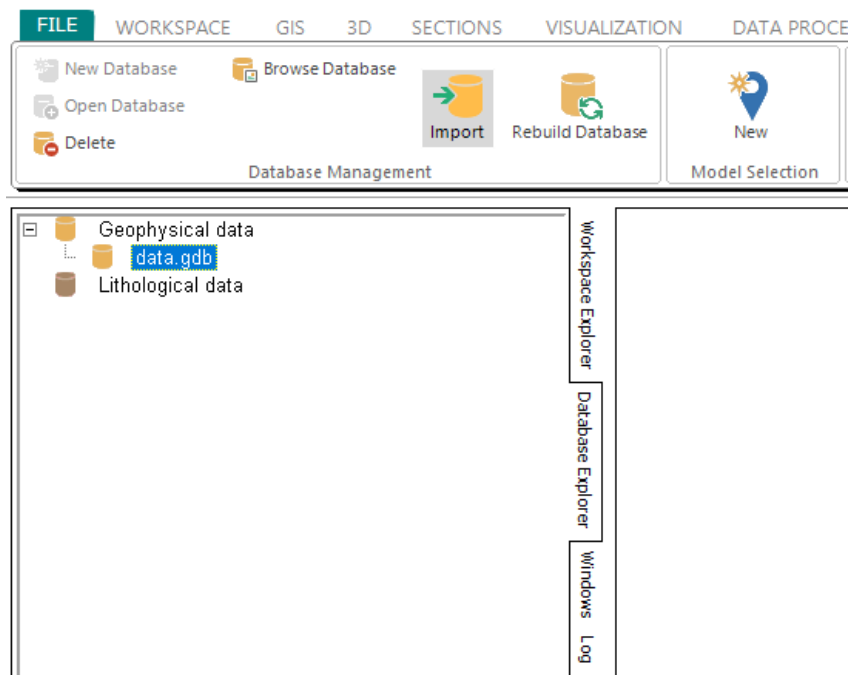
Line no.	Line text	Comments
1	Topographical data	header
2	2	Type of x-location. 1 = true horizontal distance, 2 = distance along the ground surface.
3	156	Number of coordinates
4	100 -1.65	First X and Z coordinates of topography point along the profile
5	200 -0.49	Second X and Z coordinates of topography point along the profile
6	...	Remaining X and Z coordinates of topography point along the profile
7	10000 4.94	Last X and Z coordinates of topography point along the profile
8	1	The topography data point where the first electrode is written. Here the first electrode is positioned in horizontal coordinate of 200.

Import of ERT/IP data into Aarhus Workbench

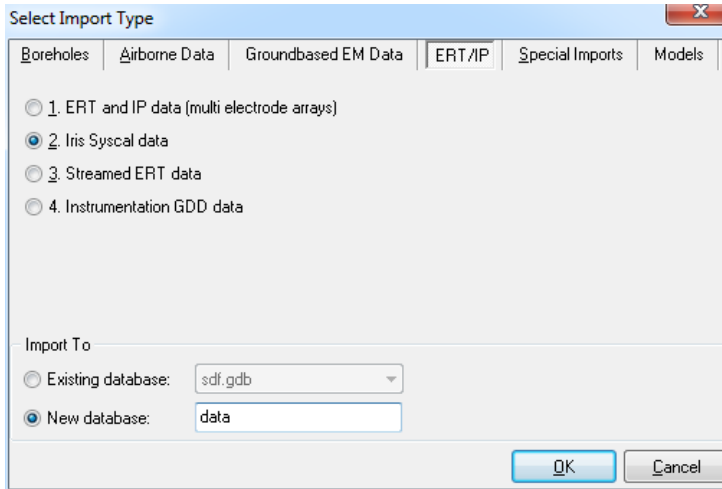
1. Open Aarhus Workbench and press New. Create a new workspace. If no coordinate system is available for the data, use EPSG 32632 to create a false coordinate system.



2. Press finish and go to database explorer and click import



- Press finish and select DC resistivity and IP data as import type



Select Import Type

Boreholes Airborne Data Groundbased EM Data **ERT/IP** Special Imports Models

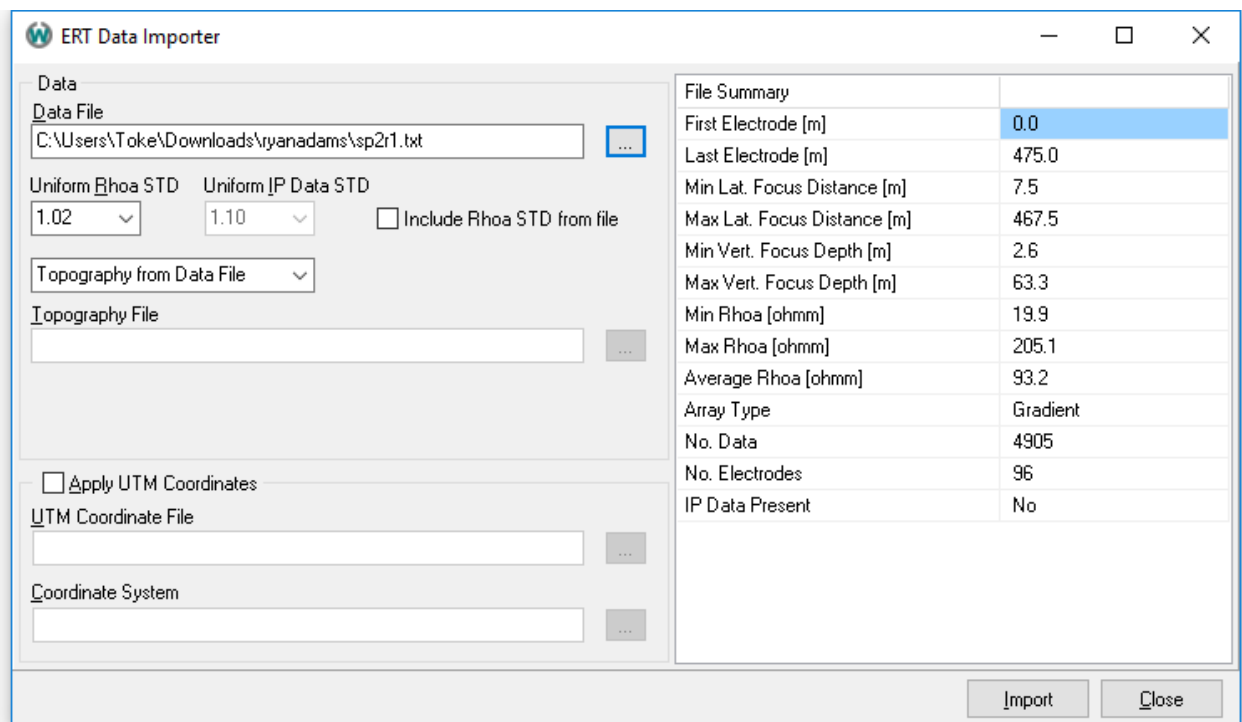
☐ 1. ERT and IP data (multi electrode arrays)
☒ 2. Iris Syscal data
☐ 3. Streamed ERT data
☐ 4. Instrumentation GDD data

Import To

☐ Existing database: sdf.gdb
☒ New database: data

OK Cancel

- Select the spreadsheet data file. When loaded information from the data file will be listed in file summary. Standard deviation for Rhoa and IP can be set during import, External grid file can be loaded for topography. If no topography information is available, choose "Topography from data file" and no topography will be imported. If coordinates are not in the datafile, the user can apply UTM coordinates by loading a .ewp file and specify the utm zone. Press import when finished and data is ready for processing.



ERT Data Importer

Data

Data File
C:\Users\Toke\Downloads\ryanadams\sp2r1.txt

Uniform Rhoa STD 1.02 Uniform IP Data STD 1.10 ☐ Include Rhoa STD from file

Topography from Data File

Topography File

☐ Apply UTM Coordinates

UTM Coordinate File

Coordinate System

File Summary

First Electrode [m]	0.0
Last Electrode [m]	475.0
Min Lat. Focus Distance [m]	7.5
Max Lat. Focus Distance [m]	467.5
Min Vert. Focus Depth [m]	2.6
Max Vert. Focus Depth [m]	63.3
Min Rhoa [ohmm]	19.9
Max Rhoa [ohmm]	205.1
Average Rhoa [ohmm]	93.2
Array Type	Gradient
No. Data	4905
No. Electrodes	96
IP Data Present	No

Import Close